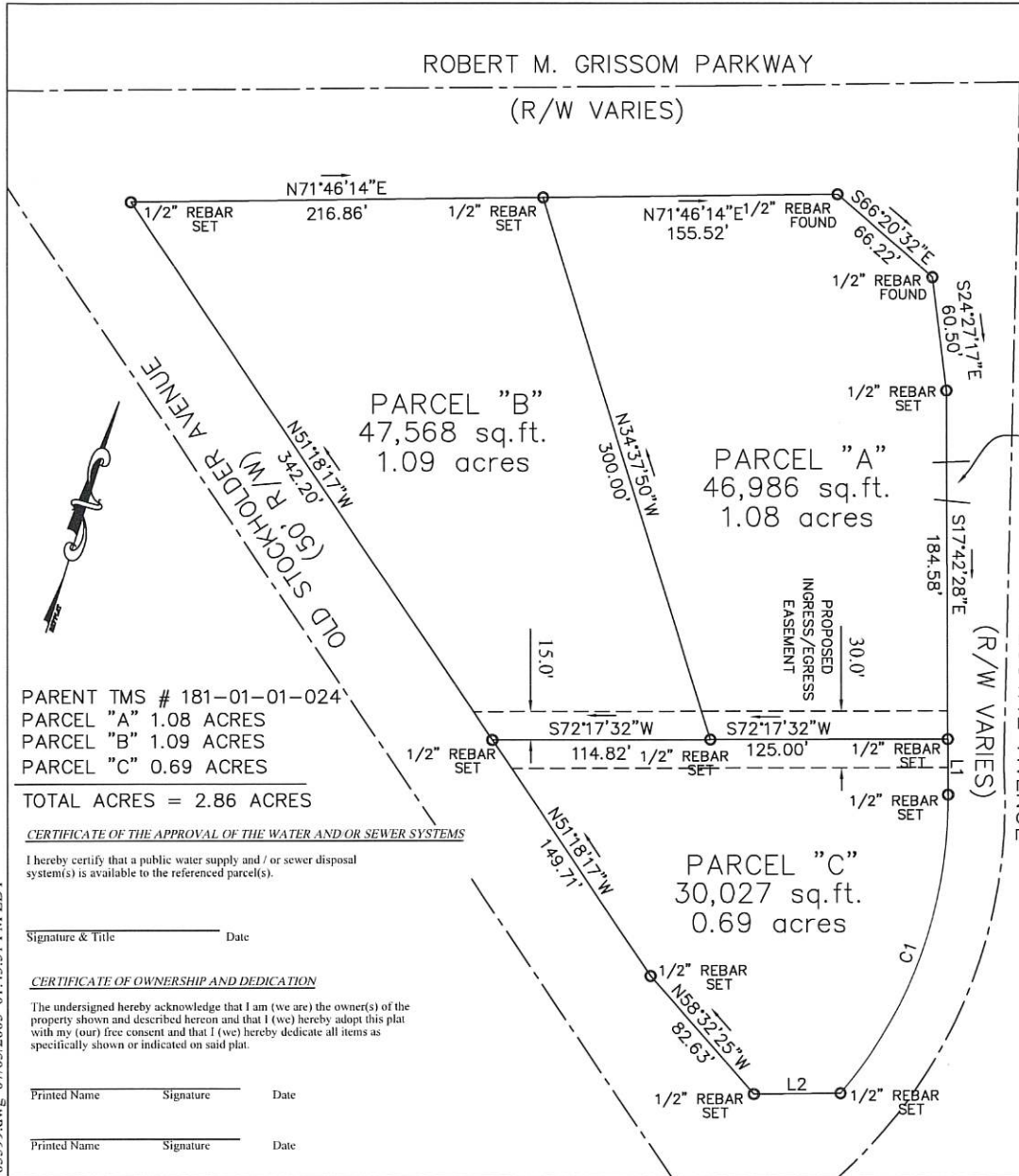
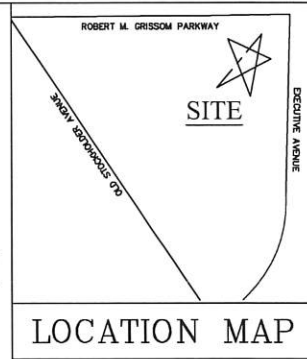


05599.dwg 07/05/2005 01:43:51 PM EDT



**OWNER OF RECORD**  
 HIGHLAND DEVELOPMENT  
 OF MYRTLE BEACH INC.  
 707 OLEANDER DRIVE  
 MYRTLE BEACH S.C. 29440



LINE TABLE		
LINE	LENGTH	BEARING
L1	29.47	S17°42'28"E
L2	45.68	S71°52'08"W

CURVE TABLE				
CURVE	LENGTH	RADIUS	CHORD	BEARING
C1	171.11	240.00	167.51	N02°17'00"E

**NOTES:**

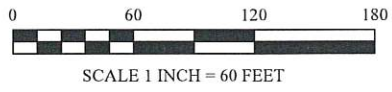
1. THIS PROPERTY IS SUBJECT TO ALL EASEMENTS AND RESTRICTIONS OF RECORD.
2. ALL OFFSETS ARE TO THE FOUNDATION OF THE HOME.
3. FOR CURRENT ZONING AND SETBACK REQUIREMENTS, CONTACT THE HORRY COUNTY OFFICE OF ZONING.
4. NO TITLE SEARCH PERFORMED BY THIS OFFICE.
5. I HEREBY CERTIFY THAT THIS IS A RESURVEY OF AN EXISTING LOT OF RECORD WITH NO BOUNDARY CHANGES WHATSOEVER.
6. THIS PROPERTY IS LOCATED IN ZONE "X-OUT" AS SHOWN ON FEMA MAP NO. 45051C0684 H DATED AUGUST 23, 1999.

**CERTIFICATE OF ACCURACY**

I hereby state that to the best of my knowledge, information and belief, the survey shown herein was made in accordance with the requirements of the "Minimum Standards Manual for the Practice of Land Surveying in South Carolina", and meets or exceeds the requirements for a CLASS A survey as specified herein.

**JULY 5, 2005**  
 Date

Robert A. Warner, P.L.S.  
**15177**  
 S.C. Registration Number



PARENT TMS # 181-01-01-024  
 PARCEL "A" 1.08 ACRES  
 PARCEL "B" 1.09 ACRES  
 PARCEL "C" 0.69 ACRES

**CERTIFICATE OF THE APPROVAL OF THE WATER AND/OR SEWER SYSTEMS**

I hereby certify that a public water supply and / or sewer disposal system(s) is available to the referenced parcel(s).

Signature & Title \_\_\_\_\_ Date \_\_\_\_\_

**CERTIFICATE OF OWNERSHIP AND DEDICATION**

The undersigned hereby acknowledge that I am (we are) the owner(s) of the property shown and described hereon and that I (we) hereby adopt this plat with my (our) free consent and that I (we) hereby dedicate all items as specifically shown or indicated on said plat.

Printed Name \_\_\_\_\_ Signature \_\_\_\_\_ Date \_\_\_\_\_

Printed Name \_\_\_\_\_ Signature \_\_\_\_\_ Date \_\_\_\_\_

LEGEND  
 C1 - CONCRETE FOUNDATION  
 C2 - CONCRETE FOUNDATION  
 C3 - CONCRETE FOUNDATION  
 C4 - CONCRETE FOUNDATION  
 C5 - CONCRETE FOUNDATION  
 C6 - CONCRETE FOUNDATION  
 C7 - CONCRETE FOUNDATION  
 C8 - CONCRETE FOUNDATION  
 C9 - CONCRETE FOUNDATION  
 C10 - CONCRETE FOUNDATION  
 C11 - CONCRETE FOUNDATION  
 C12 - CONCRETE FOUNDATION  
 C13 - CONCRETE FOUNDATION  
 C14 - CONCRETE FOUNDATION  
 C15 - CONCRETE FOUNDATION  
 C16 - CONCRETE FOUNDATION  
 C17 - CONCRETE FOUNDATION  
 C18 - CONCRETE FOUNDATION  
 C19 - CONCRETE FOUNDATION  
 C20 - CONCRETE FOUNDATION  
 C21 - CONCRETE FOUNDATION  
 C22 - CONCRETE FOUNDATION  
 C23 - CONCRETE FOUNDATION  
 C24 - CONCRETE FOUNDATION  
 C25 - CONCRETE FOUNDATION  
 C26 - CONCRETE FOUNDATION  
 C27 - CONCRETE FOUNDATION  
 C28 - CONCRETE FOUNDATION  
 C29 - CONCRETE FOUNDATION  
 C30 - CONCRETE FOUNDATION  
 C31 - CONCRETE FOUNDATION  
 C32 - CONCRETE FOUNDATION  
 C33 - CONCRETE FOUNDATION  
 C34 - CONCRETE FOUNDATION  
 C35 - CONCRETE FOUNDATION  
 C36 - CONCRETE FOUNDATION  
 C37 - CONCRETE FOUNDATION  
 C38 - CONCRETE FOUNDATION  
 C39 - CONCRETE FOUNDATION  
 C40 - CONCRETE FOUNDATION  
 C41 - CONCRETE FOUNDATION  
 C42 - CONCRETE FOUNDATION  
 C43 - CONCRETE FOUNDATION  
 C44 - CONCRETE FOUNDATION  
 C45 - CONCRETE FOUNDATION  
 C46 - CONCRETE FOUNDATION  
 C47 - CONCRETE FOUNDATION  
 C48 - CONCRETE FOUNDATION  
 C49 - CONCRETE FOUNDATION  
 C50 - CONCRETE FOUNDATION  
 C51 - CONCRETE FOUNDATION  
 C52 - CONCRETE FOUNDATION  
 C53 - CONCRETE FOUNDATION  
 C54 - CONCRETE FOUNDATION  
 C55 - CONCRETE FOUNDATION  
 C56 - CONCRETE FOUNDATION  
 C57 - CONCRETE FOUNDATION  
 C58 - CONCRETE FOUNDATION  
 C59 - CONCRETE FOUNDATION  
 C60 - CONCRETE FOUNDATION  
 C61 - CONCRETE FOUNDATION  
 C62 - CONCRETE FOUNDATION  
 C63 - CONCRETE FOUNDATION  
 C64 - CONCRETE FOUNDATION  
 C65 - CONCRETE FOUNDATION  
 C66 - CONCRETE FOUNDATION  
 C67 - CONCRETE FOUNDATION  
 C68 - CONCRETE FOUNDATION  
 C69 - CONCRETE FOUNDATION  
 C70 - CONCRETE FOUNDATION  
 C71 - CONCRETE FOUNDATION  
 C72 - CONCRETE FOUNDATION  
 C73 - CONCRETE FOUNDATION  
 C74 - CONCRETE FOUNDATION  
 C75 - CONCRETE FOUNDATION  
 C76 - CONCRETE FOUNDATION  
 C77 - CONCRETE FOUNDATION  
 C78 - CONCRETE FOUNDATION  
 C79 - CONCRETE FOUNDATION  
 C80 - CONCRETE FOUNDATION  
 C81 - CONCRETE FOUNDATION  
 C82 - CONCRETE FOUNDATION  
 C83 - CONCRETE FOUNDATION  
 C84 - CONCRETE FOUNDATION  
 C85 - CONCRETE FOUNDATION  
 C86 - CONCRETE FOUNDATION  
 C87 - CONCRETE FOUNDATION  
 C88 - CONCRETE FOUNDATION  
 C89 - CONCRETE FOUNDATION  
 C90 - CONCRETE FOUNDATION  
 C91 - CONCRETE FOUNDATION  
 C92 - CONCRETE FOUNDATION  
 C93 - CONCRETE FOUNDATION  
 C94 - CONCRETE FOUNDATION  
 C95 - CONCRETE FOUNDATION  
 C96 - CONCRETE FOUNDATION  
 C97 - CONCRETE FOUNDATION  
 C98 - CONCRETE FOUNDATION  
 C99 - CONCRETE FOUNDATION  
 C100 - CONCRETE FOUNDATION

NEAR MYRTLE BEACH  
 RESUBDIVISION PLAT OF TMS # 181-01-01-024  
 ~ PREPARED FOR ~  
**NAPA AUTO PARTS**

County: **HORRY**  
 Job No.: 05599  
 Drawn By: CAC  
 Party Chief: JH  
 TMS: 181-01-01-024  
 Date: 07-05-2005  
 Ref/DB:  
 Ref/PB:  
 Robert A. Warner  
 S.C. Reg. # 15177

STATE OF SOUTH CAROLINA  
 Robert A. Warner and Associates, Inc.  
 Professional Land Surveying, Mapping and Planning  
 126 8th Avenue North  
 Myrtle Beach, South Carolina 29577  
 Phone: (843) 626-6662 / 6924  
 Fax: (843) 626-6774  
 E-mail: RWARNER500@AOL.COM